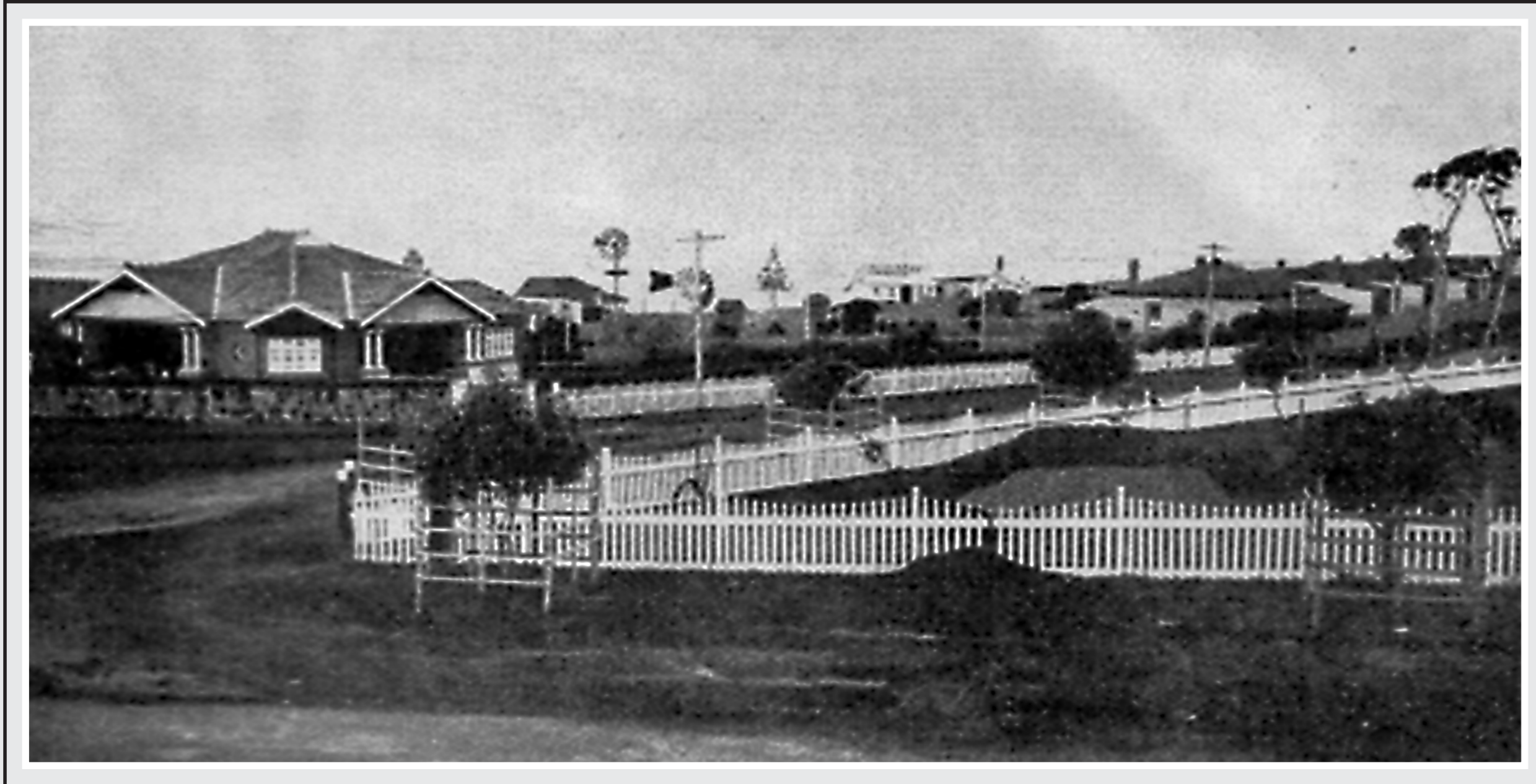


ALLAMBEE GUEST HOUSE



Located on the corner of The Entrance Road and Ocean Parade.

The site takes in the KFC site and the undeveloped 'key' site area. Built by Adella (daughter of Richard and Gertrude Taylor) and Henry Dening. They took up residence at 'Allambee' in 1923.

It was a 'grand' home boasting a circular driveway, rose gardens and beautiful verandahs which took advantage of the sweeping views from all sides.

On Sundays Fr. McMahon travelled by ferry from Wyong to celebrate mass in the 'Allambee' dining room. Mrs Dening taught catechism to the local children to prepare them for the sacrament. Mass was held in the Dening's beautiful home from 1923 - 1925. However, during holiday times, 'Allambee' had difficulty in coping with the increased numbers of worshipers due to the number of tourists who visited The Entrance. In 1925 'Allambee' hosted 2 garden fetes, and raised over 150 pounds which went towards the Catholic Church building fund.