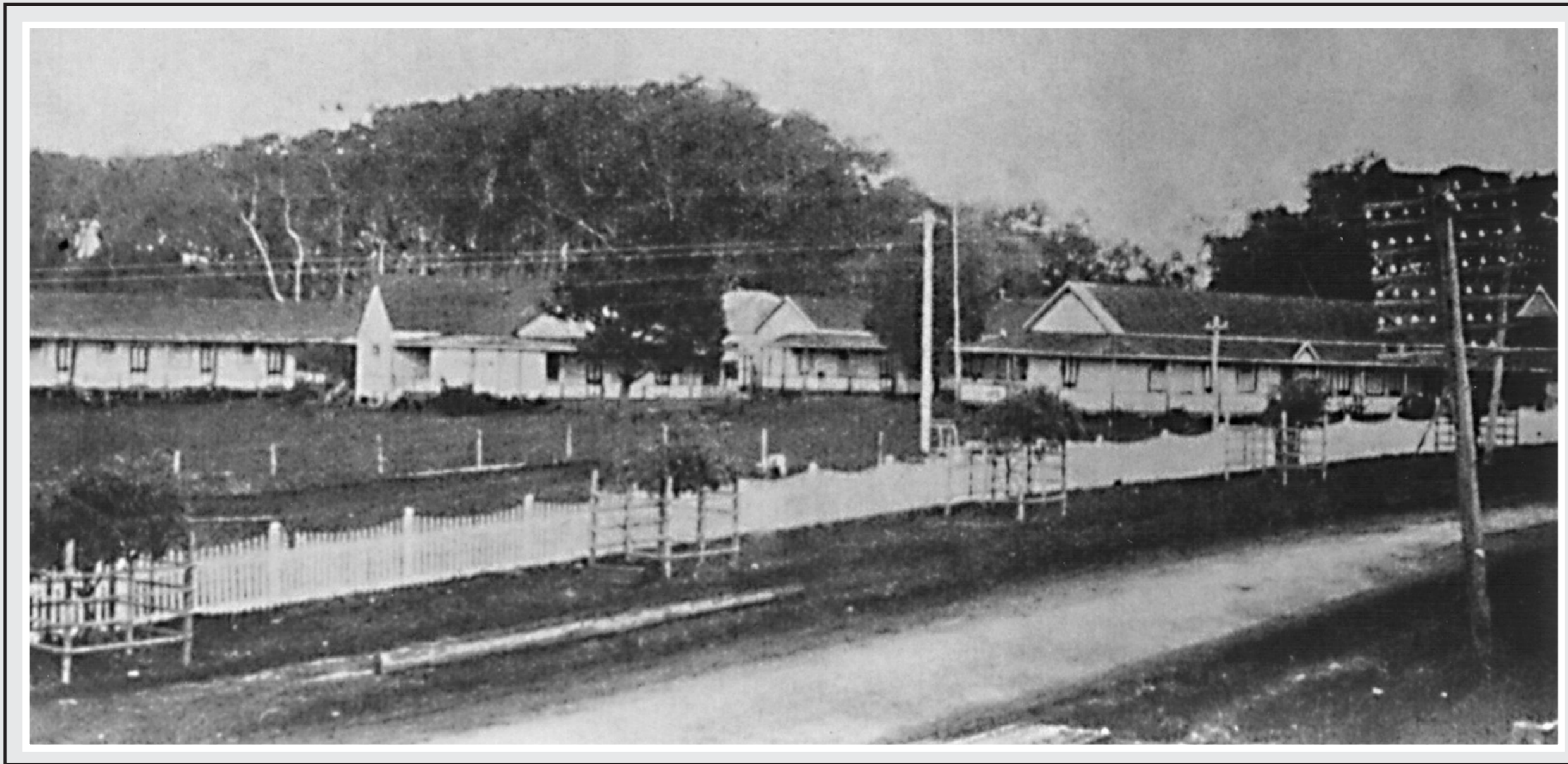


# BAYVIEW GUEST HOUSE



Located on the corner of The Entrance Road and Ocean Parade, The Entrance.

Built in 1900 by Henry and Adella Denning (daughter of Richard and Gertrude Taylor). It was the first guest house built in The Entrance and at its peak could accommodate 150 guests. 'Bayview' also provided accommodation for another 200 people in 'comfortable furnished tents for those who prefer outdoor sleeping'. In 1938 Jack Ambler purchased 'Bayview' and in the late 1950's relocated 'Tuggerah House' to the 'Bayview' site and combined both buildings into one. The combination guest houses fell into disrepair and the property was eventually sold to developers.