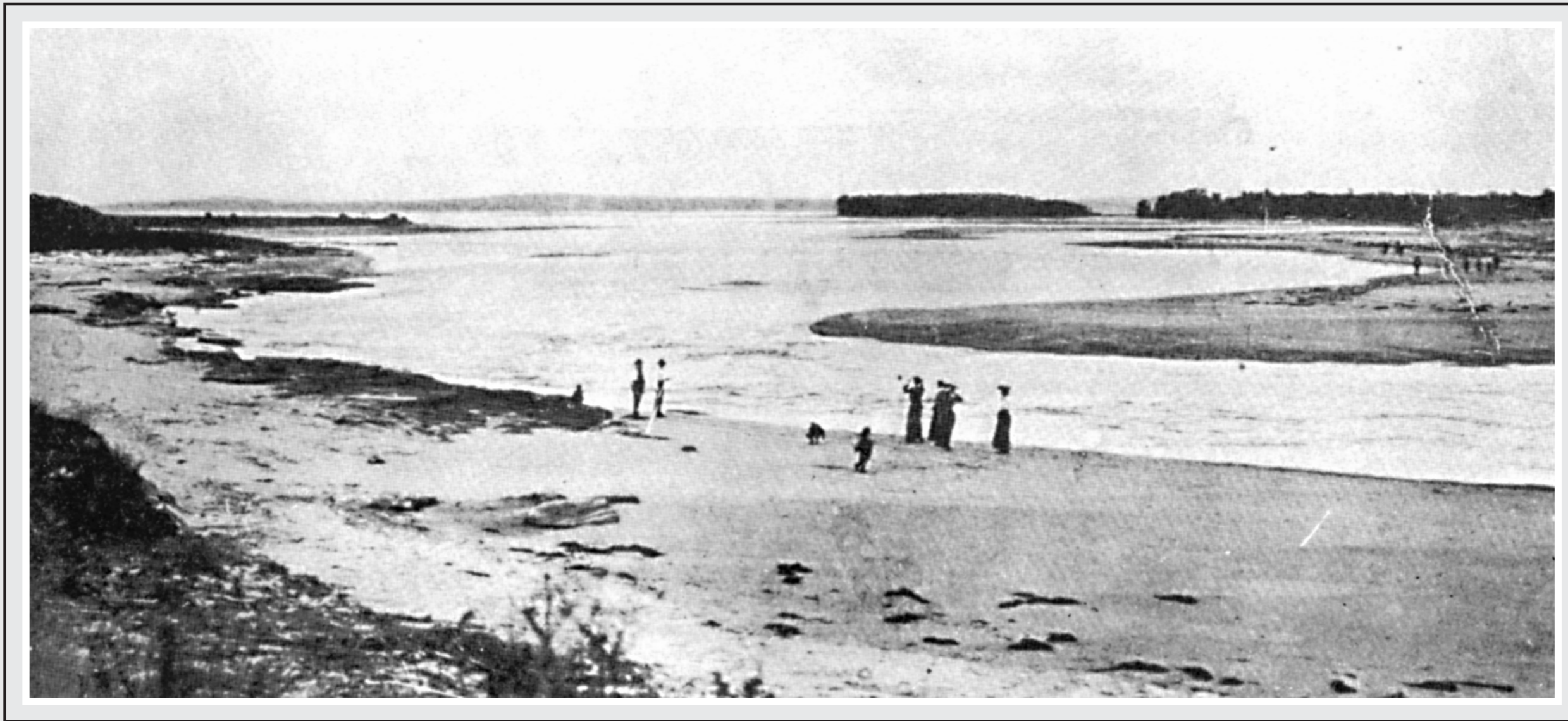


CHANNEL AS IT WAS



Dressed for a walk on the beach

It can be noted that the women shown in this picture wore long dresses and the men dressed in long trousers when at the beach.

This 1904 view shows the channel at The Entrance in its unspoiled state, long before 'improvements' of many kinds were effected.

Those pictured left to right: Fisheries inspector Mr C Gordon, Pioneer Mr R B Taylor, Mrs Adella Dening and three of her sisters, the little girl is Tas Dening.