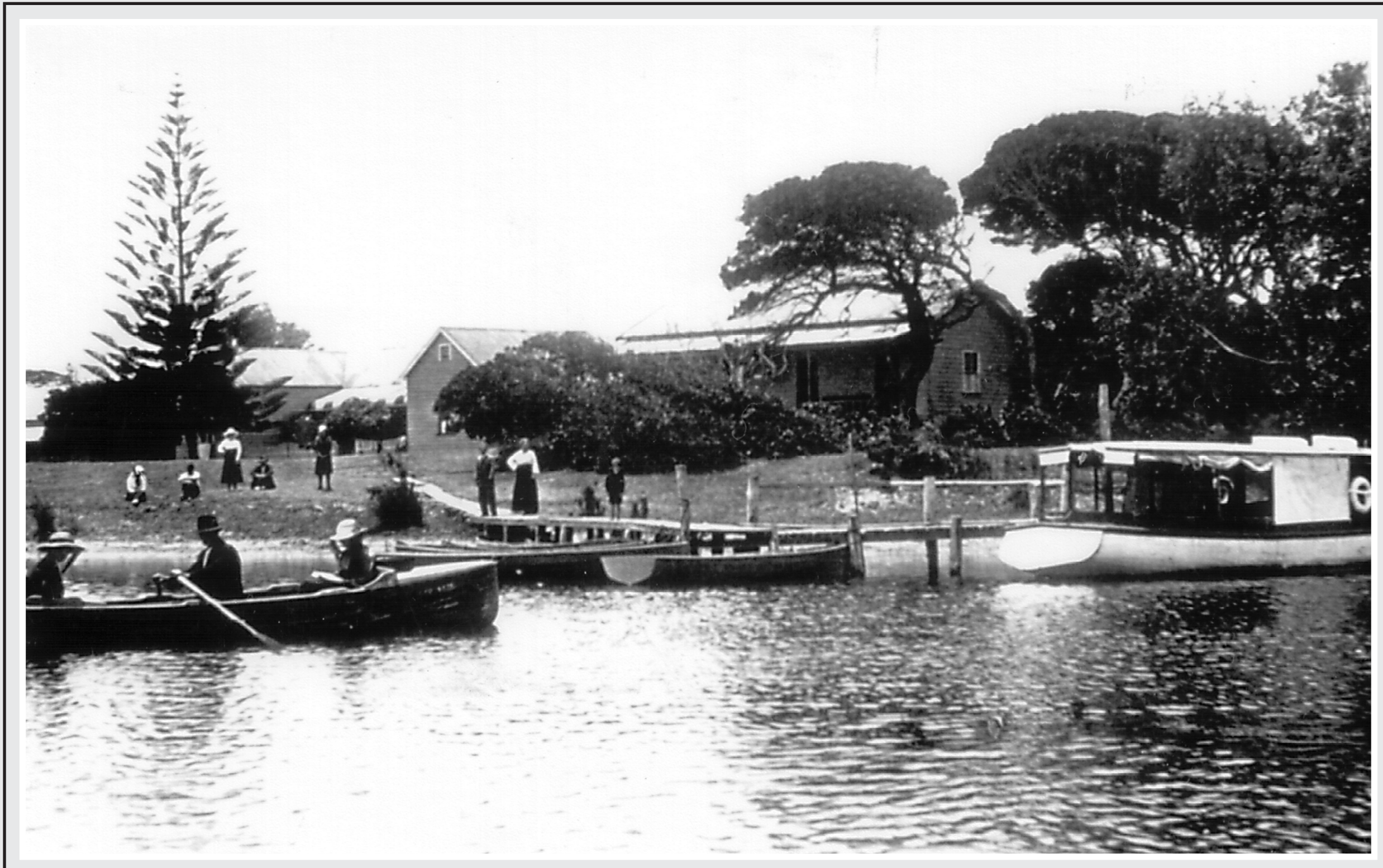


DUNLEITH GUEST HOUSE



Located in Hutton Road,
The Entrance North.
(where Dunleith Tourist
Park stands today).

Built in 1890 by Walter and Edith (nee Hargraves) Denniss it was the first guest house to operate in the district. Guests were transported from Tuggerah Railway Station in 'Dunleith's' sailing boat, the 'Muriel'. In 1903 replaced by a modern motorised launch the 'Ada', it was the first of its type to operate on Tuggerah Lakes.

'Dunleith' continued to grow with bachelor and married quarters added to the already successful guest house. With the addition of bungalows 'Dunleith' became even more appealing to tourists.

In 1958 the Littlefield family bought the property and have successfully developed the popular tourist park into what it is today. The Norfolk pine tree seen here was planted by Walter Denniss to celebrate the birth of his only daughter Ada on 15th November, 1891. The tree has been preserved by the current owners and today it creates a focal point in the town when it is illuminated in the evenings.