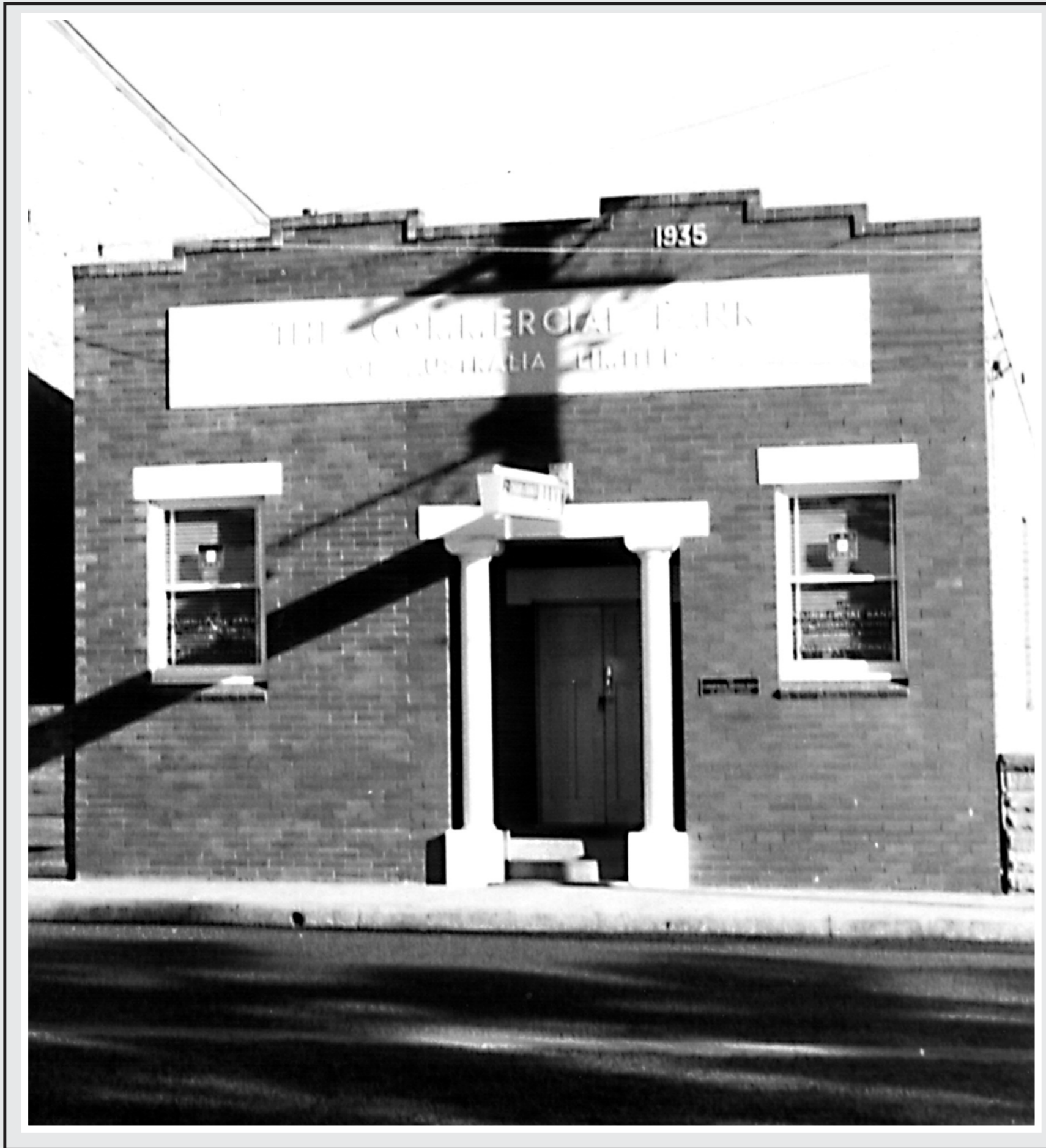


THE FIRST BANK BUILDING



Located at 115 The Entrance Road, The Entrance.

The original bank building consisted of 2 rooms and was constructed of timber and fibro. It was located on the corner of Coral Street and The Entrance Road. Originally the bank was open for business just one day per week, however, after a short time it became necessary to open 3 days in the week.

Bank staff travelled from the Wyong Branch by ferry to man The Entrance office.

The Wyong Bank Manager at that time was Mr 'Tiny' Edwards.

As business increased a more substantial building became necessary, so a purpose built bank was constructed

by local builders, George and Clarence Smith for and on land owned by Austin Taylor in 1923. It was leased to the Commercial Bank of Australia, Wyong.

On its completion the Commercial Bank of Australia opened its doors at 115 The Entrance Road.

The bank remained at that location until the amalgamation of the banks occurred, it was then moved to the corner of Denning Street and The Entrance Road.