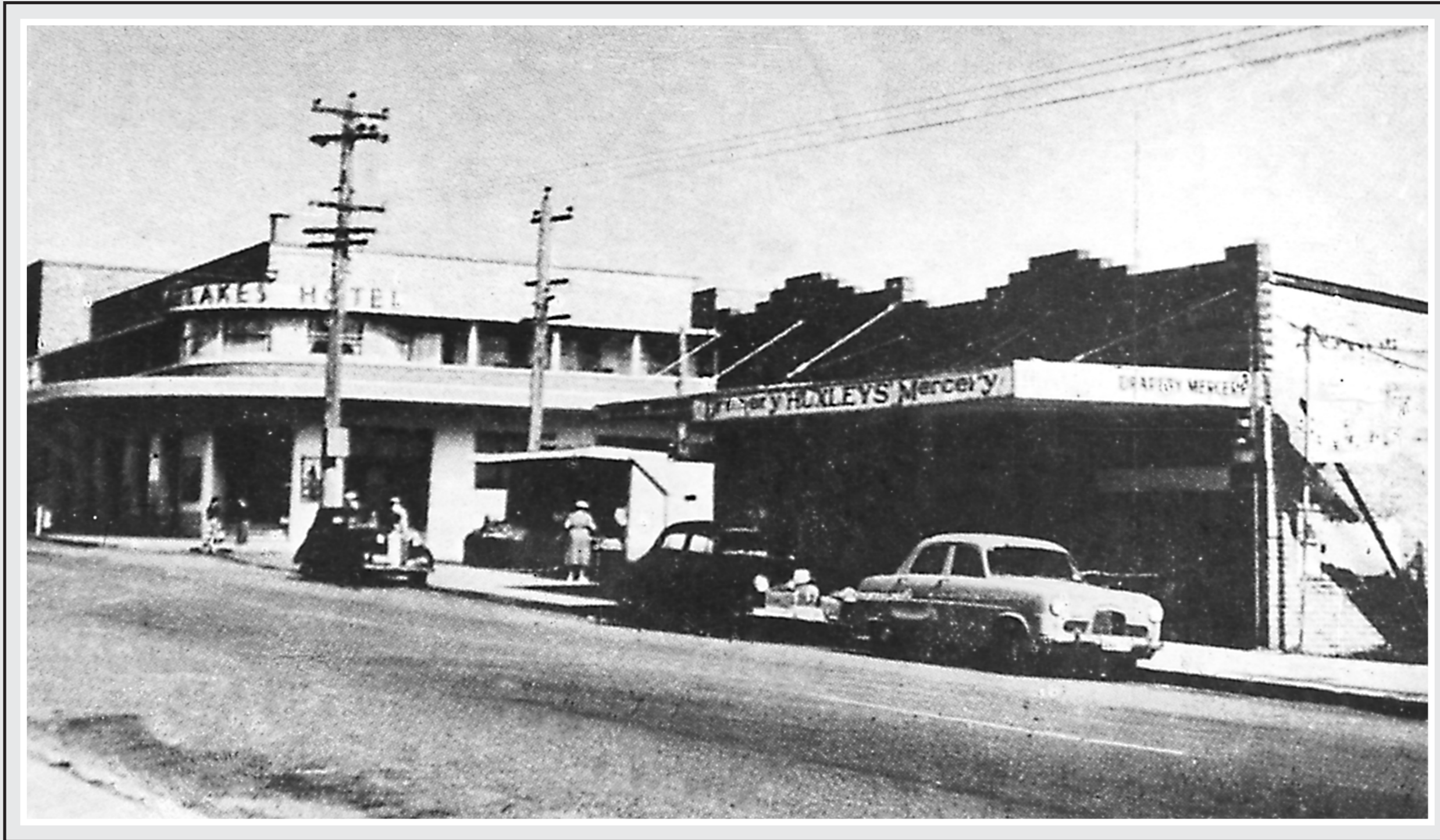


# GOLDEN GATE CAFE



Located at 195  
The Entrance Road,  
The Entrance.

Built in 1933 by Mr Mantoni after his original cafe, which was located at the 'bottom end' of town, was destroyed in the Wintergarden fire. His first cafe was highly successful as it generated business from the 'Wintergarden', residents and tourists going to and from the ferries.

Just prior to the fire the Prince Edward Theatre had opened. After the fire Mr Mantoni who was an extremely astute businessman decided to open a new cafe opposite the new Prince Edward Theatre. He successfully operated the business for some years before he sold it to a unknown American who renamed the cafe the 'Golden Gate Cafe'. In the 1940's Nick and Thea Lourandos purchased the cafe. Then in 1952 a young couple Dennis and Lola Raft joined the Lourandos's as business partners in the cafe. In 1955, Lola's brother Johnny Adilinis purchased the Lourandos's share of the business and became a partner.

Today Lola Raft and Johnny Adilinis are still operating the 'Golden Gate Cafe'.