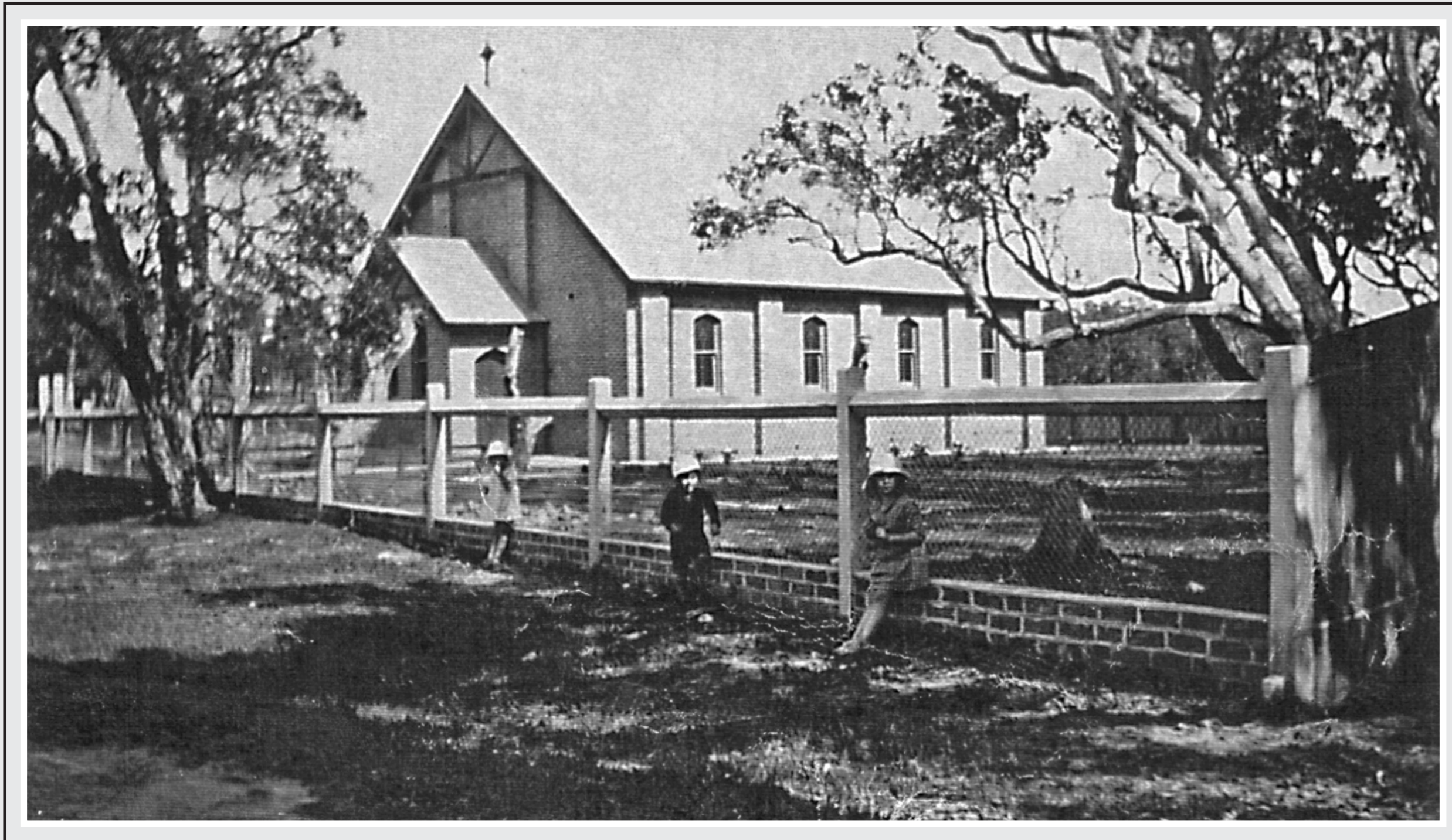


OUR LADY OF THE ROSARY CATHOLIC CHURCH



Located on the corner of The Entrance Road and Ashton Ave, The Entrance.

The land was donated by Richard and Gertrude Taylor for a Catholic Church, School and Convent. The church was built from standstock bricks that were made at the local brickworks which was located in Taylor Street, The Entrance.

The foundation stone was laid and blessed by His Grace Michael Kelly, Archbishop of Sydney on 4th October, 1925. The first Mass was celebrated on Christmas Day 1925 by Fr. Edward McMahon. The first recorded marriage in the church was between Reginald Frewin and Valerie Smith on 25th October, 1930. Extensions to the church were completed in 1936.

In 1962 the church was demolished ending its 37 years of history.

Construction of the new church began on 21st March, 1961. It was blessed and dedicated as a war memorial on 16th December, 1962.