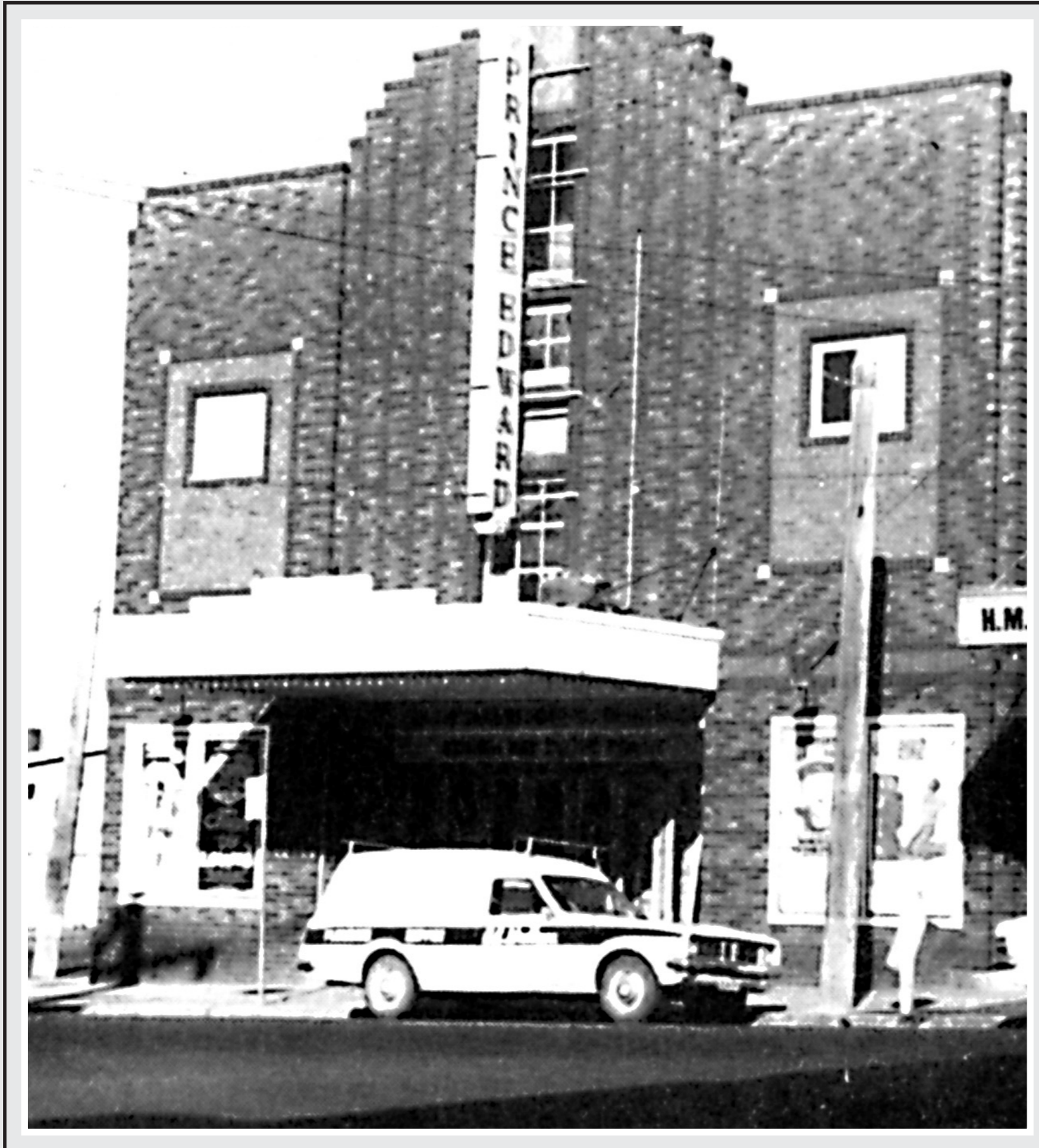


PRINCE EDWARD THEATRE



Located at 54 The Entrance Road, The Entrance.
(Is still operating in this location).

Built by Edward J Brennan - the theatre was considered one of the most elaborate outside the Sydney area. It was officially opened on 21st March, 1934. The Prince Edward featured an outstanding interior which was made up of highly decorated arches and unique friezes. A full house seated 750 people. A major feature of the theatre was the exterior brick facade.

By September 1976 the Prince Edward Theatre only operated during School holidays. The Theatre closed on 11th June, 1977, however it re-opened on 21st December 1981. The building was gutted with only the stairs to cinema 1 and the leadlight on the front doors remaining of the old original theatre.

The original terrazzo floor is thought to be under the carpet in the foyer. The theatre was capable of seating 380 people and included specialty shops.

In 1988 the theatre was renamed The Entrance Cinema and a theatrette was added. It was sold again in 2005 and still screens many of the latest releases today.