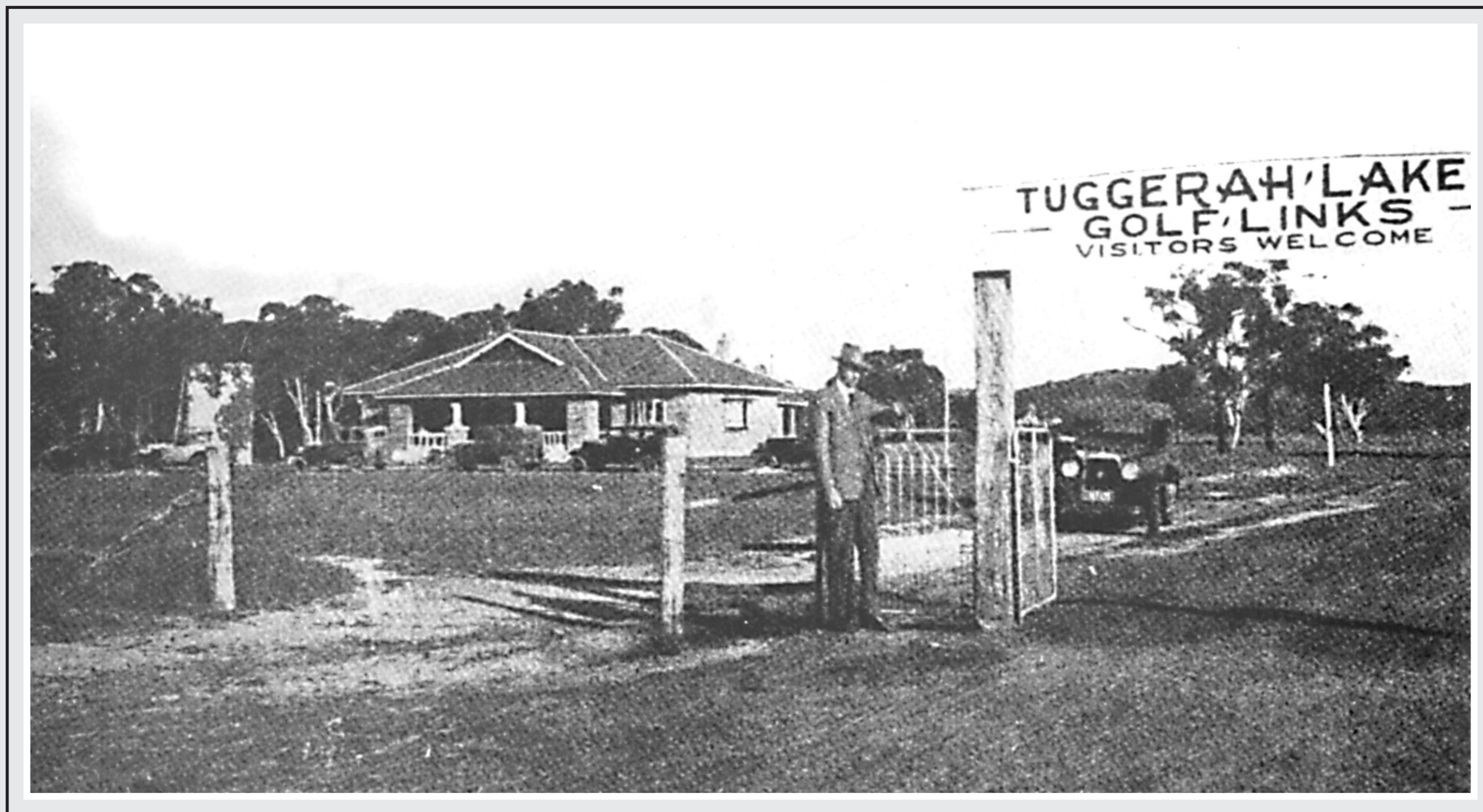


# TUGGERAH LAKES GOLF CLUB



Henry (Todd) Shaw came to the area in 1927.

He purchased approximately 170 acres of land at Killarney Vale where he built his stately residence. He laid down a 9 hole golf course, and transformed his home into the Club House, on the understanding when the Club was financially able they would purchase the property. The official opening took place on October 5, 1929.

The Tuggerah Lakes Golf Club was officially formed on September 1, 1930. On August 1, 1954, the Club transferred to the current location at Shelly Beach.